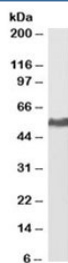


## KPNA2 Antibody [Biotin Conjugate] (R35508BTN)

Catalog No.	Formulation	Size
R35508BTN	0.5 mg/ml in 1X TBS, pH7.3, with 0.5% BSA (US sourced) and 0.02% sodium azide	100 ug

[Bulk quote request](#)

Availability	1-3 business days
Species Reactivity	Human
Predicted Reactivity	Dog, Mouse, Rat
Format	Biotin Conjugate
Clonality	Polyclonal (goat origin)
Isotype	Goat Ig
Purity	Antigen affinity
Gene ID	3838
Applications	Western Blot : 0.1-0.3ug/ml Immunofluorescence : suitable ELISA (peptide) LOD : 1:32000
Limitations	This KPNA2 antibody is available for research use only.



Western blot testing of HeLa lysate with biotinylated KPNA2 antibody at 0.2ug/ml. Predicted molecular weight: ~58kDa. An NAP blocker was used in place of non-fat milk as blocking solution and diluent. (1)

### Description

Additional name(s) for this target protein: Karyopherin alpha 2

### Application Notes

Optimal dilution of the KPNA2 antibody should be determined by the researcher.

1. Do not use a blocking agent or diluent that contains biotin (including milk and some BSA preparations) when testing with biotinylated antibodies. A non-animal protein (NAP) blocker is recommended.

## **Immunogen**

Amino acids QVQDGAPGTFNF were used as the immunogen for this KPNA2 antibody.

## **Storage**

Aliquot and store the KPNA2 antibody at -20oC.